

An Introduction to the MIDDLE YEARS PROGRAM (MYP) for Parents

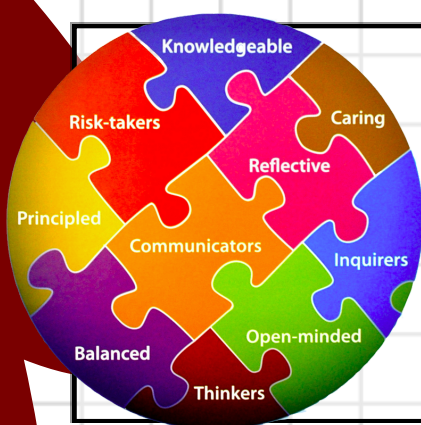


OVERVIEW

The MYP aims to develop students who are:

- Active learners
- Internationally minded
- Able to empathize with others
- Have the intellect and skills to pursue lives of purpose and meaning.

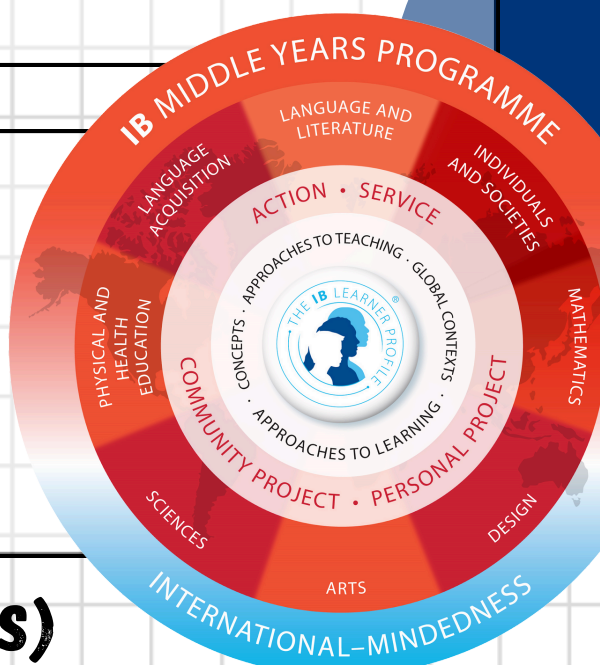
THE LEARNER PROFILE



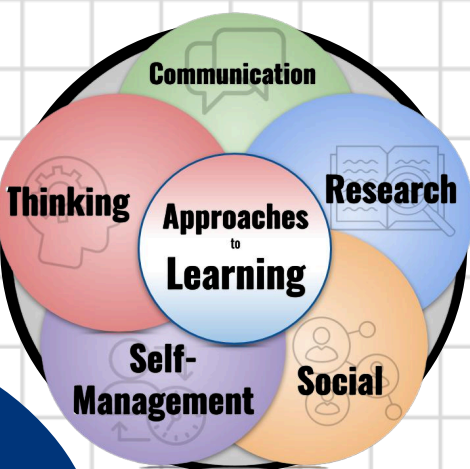
The MYP is designed to help learners develop these characteristics and offers students opportunities to:

- Develop their potential
- Explore their own learning preferences
- Take appropriate risks
- Reflect on and develop a strong sense of personal identity.

The MYP is meant to be accessible for ALL students. At the centre is our learning community - our students, teachers and families. Moving outward focuses on HOW to learn and how we can use those learning skills to grow and impact the communities we interact with. This learning is all happening underneath the 8 core subject areas our students encounter.



APPROACHES TO LEARNING (ATLS)



These are the important, lifelong learning skills that focus helping students understand how to learn effectively. Students explore these ATLS and their understanding across all subject areas in different capacities. They are required to set goals each year for each of these ATLS, and then with time, they present evidence and reflect on how they walked towards those goals. Our ATLS meet the Core Competencies requirements of the BC Curriculum.

ASSESSMENT

Each MYP course's assessment is divided up into 4 different, lettered Criterion to capture the various skills required for engaging with that subject. Over the course, the 4 Criterion will be assessed using both the BC Proficiency Scale & their corresponding MYP Levels.

EMERGING	DEVELOPING	PROFICIENT	EXTENDING
Levels 1-2	Levels 3 - 4	Levels 5 - 6	Levels 7 - 8

These levels are given using rubrics addressing the specific Criterion and their strands. A given level is based on a student's most recent, consistent assessed work via products, observations and conversations. Parents and guardians will be notified of their student's progress and levels in a course via 3 Learning Updates throughout the school year.

At the end of the course, on the final Learning Update, the levels across the various Criterion are totaled and converted to a final Overall Proficiency and a corresponding final IB Score out of 7.