

# **GEC PAC Meeting**

**Wednesday, April 9<sup>th</sup>, 2025**

**@ 9:00am in the GEC Learning Commons**



## **In attendance:**

Emily Gardiner (Co-Chair, PAC)  
Amanda Clark (Co-Chair & Treasurer, PAC)  
Jess Jenkin (Hot Lunch Coordinator, PAC)  
Lauren Fuhre (Hot Lunch Coordinator, PAC)  
Lisa Fairburn (DPAC rep, PAC)  
Anna Stewart (Secretary, PAC)  
Robyn Evans (Principal, GEC)  
Heather Nelson

Shevaun Brown  
Corinne McLaughlin  
Charlie Bradbury  
Kirstie Simpson  
Leanne Todd  
Mike Clark  
Chris Kennedy (Superintendent, WVSD)

In Lieu of our regular PAC meeting we are pleased to host Superintendent Chris Kennedy to discuss AI use in West Vancouver schools. Special thanks to Superintendent Kennedy for this engaging and informative presentation.

Robyn Evans: Land Acknowledgement and introduction of Chris Kennedy, Superintendent of West Vancouver Schools.

Slide show to follow:



# AI Unlocked: Practical Tools for Your Daily Life at Home and Beyond

Chris Kennedy

Page 1

## Friend



## Three Types of AI

### Reactive

- Responds to specific input without actually learning from past experiences
- Specific input always results in same output
- Roomba

### Predictive

- Analyzes data to predict future events or behaviours
- Looking for patterns in data
- Spotify, Netflix

### Generative

- Generates new content or outputs based on massive amounts of data
- Large Language Module
- ChatGPT

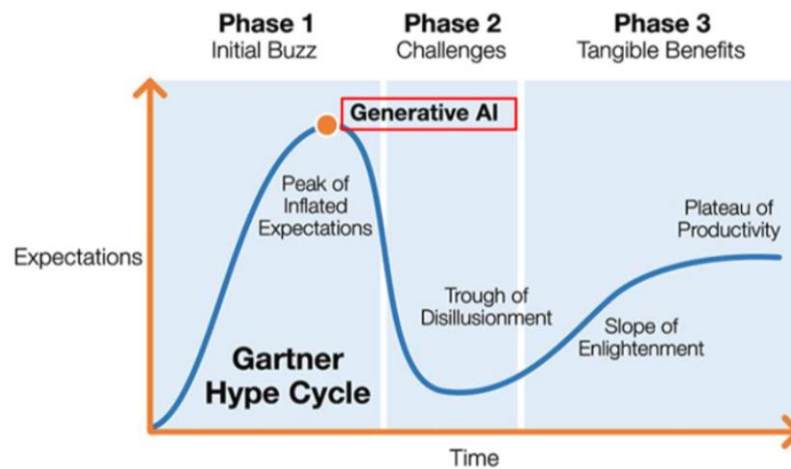
# What is Generative AI?

Generative AI produces new content, such as text, music, images, and videos, by generating outputs based on patterns learned from existing data.

It leverages advanced algorithms to generate content autonomously, *mimicking* human-like intelligence and creativity.



Page 4



"We tend to overestimate the effect of a technology in the short run and underestimate the effect in the long run."  
(Amara's Law)



## User Acceleration

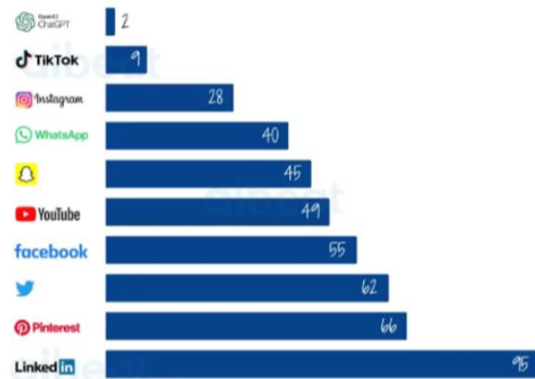
Time to reach one million users from launch



Source: Statista - ChatGPT Sprints to One Million Users

## User Acceleration

Months famous consumer apps took to get to 100 million users



aibeat.co

aibeat



[Click Here to Draw](#)

# Quick Draw



# Real or AI?



## Context of Generative AI in BC



### Ministry of Education

Ministry providing high level consistent messaging around generative AI with a number of supportive materials they have developed

The provincial government has given the nod that they acknowledge gen AI is part of our lives, and we need to consider its use throughout the school system.



### School Districts

Set local policies and guidelines for use in schools

Adopted specific tools to be used and supported



### Classrooms

We are using AI to help personalize learning, and offer additional supports and extensions for students. Seeing differences in use across grades and from class to class.

Page 11



Search Q

Menu

AI, or Artificial Intelligence, encompasses the capacity of machines and computer systems to replicate human-like cognitive functions, including learning, problem-solving, decision-making, and utilizing algorithms and data.

Ethical, responsible, and safe use of AI in K-12 education requires a human-centered approach that prioritizes meaningful learning experiences. The integration of AI, when thoughtfully applied, has the potential to enrich our education system by streamlining administrative tasks, enhancing efficiency, and enabling a dedicated focus on student-centered activities. While AI can act as a supplementary tool and offer enrichment and depth to classroom practices, choices about the use of AI in the classroom are ultimately made by teachers based on the needs of the students.

Education, by its nature, is relational, especially when emphasizing the irreplaceable and integral role of human

### Considerations for Using AI Tools in K-12 Schools



## How West Vancouver has tried to get out in front

- Make someone the lead
- Select a small number of tools to support
- Engaged everyone – especially parents
- Established AI Principles
- Talked about it and modeled its use
- Brought in outside experts
- Joined various local, national and international networks around it



Page 13

Establish safe habits,  
educated use and  
guidelines to follow,  
regardless of tool.

## Guiding Principles

**WEST VANCOUVER - CORE VALUES & GUIDING PRINCIPLES**

**Excellence Guiding Principle: Ensure high-quality AI systems**

We commit to excellence by ensuring that any AI systems we implement are of the highest quality. This means using reliable, accurate, and effective AI technologies that enhance educational experiences and administrative processes.

**Inclusivity Guiding Principle: Promote fairness and equity in AI**

Inclusivity aligns with promoting fairness and equity in AI. We ensure that AI tools are designed and used to provide equal learning opportunities for all students, reflecting the diversity in our community and preventing any form of bias or discrimination.

**Accountability Guiding Principle: Ensure transparency, accountability and ethical use in AI use**

We maintain accountability by making our AI processes and decisions transparent. This includes being clear about how AI systems are used, what data is collected, and how decisions are made, ensuring trust and integrity and ethical responsibility in our AI initiatives.

**Authenticity Guiding Principle: Provide meaningful and relevant AI experiences**

Authenticity in education is reflected in providing meaningful and relevant learning experiences through AI. We use AI to create real-world applications and enhance the authenticity of educational content, ensuring it resonates with students and prepares them for future challenges.

**Innovation Guiding Principle: Encourage innovation and creativity in AI**

We pursue innovation by fostering a spirit of curiosity and inquiry in AI. This involves exploring new AI technologies and methodologies to enhance teaching and learning, encouraging creative problem-solving and forward-thinking in our educational practices.

**Engagement Guiding Principle: Foster community involvement and collaboration in AI**

Engagement is about building relationships and encouraging input, which aligns with fostering community involvement in AI. We actively involve students, parents, educators, and community members in discussions and decisions about AI, ensuring collaborative development and implementation.

**Wellness Guiding Principle: Promote well-being and positive impact through AI**

Happiness and well-being are essential, and we aim to use AI to support these values. This means using AI to enhance the educational experience, making learning more engaging and enjoyable, and ensuring that AI contributes positively to the mental and physical well-being of students and staff.

By aligning our core values with these guiding principles for AI, we ensure that our use of AI technologies in education is ethical, effective, and enriching for all members of our school community.

Page 15

## An example

### Accountability: Guiding Principle: Ensure transparency, accountability and ethical use in AI use

We maintain accountability by making our AI processes and decisions transparent. This includes being clear about how AI systems are used, what data is collected, and how decisions are made, ensuring trust and integrity and ethical responsibility in our AI initiatives.

Page 16

#### WEST VANCOUVER SCHOOLS GUIDELINES FOR THE USE OF AI

Use district approved AI tools in a way that is consistent with school expectations.

Follow your teachers guidelines on when and how to use AI to support your learning.

Use AI tools to support your learning and understanding, not to do the work for you.

Maintain your academic integrity - if you use AI tools to help you, make sure you say so.

Protect your privacy - do not enter any personal or private information into the AI tools.

Remember that AI tools occasionally produce biased or inaccurate information. Check for it.



#### WHEN DO I USE AI?

##### No AI

You may not use AI

##### Idea Starter

You can use AI to brainstorm, generate ideas and develop outlines

##### Feedback Helper

You can use AI to edit and get feedback, refine original thinking and revise your work

##### Work Partner

AI is your partner, you can use AI to interact and collaborate on your work



WEST VANCOUVER SCHOOLS  
A world of opportunity

## Indigenous Protocols & AI

### Practicing Protocols

Following traditions and protocols are very important to Indigenous Ways of Knowing and Being. Protocol is how we ensure teachings are carried forward in a good way. Each type of work has its own set of protocols to follow (speaking in a circle, harvesting, sharing stories, ceremonial work, working with Elders, and asking permission to come onshore).

Protocols are specific to each Nation and will vary amongst the Coast Salish peoples. When sharing Indigenous knowledge you share where the teaching is from (what Nation), who shared the knowledge with you, and who gave you permission to share it. This ensures that we are using authentic stories, teachings, and world views.

Indigenous Nations have oral traditions, which means knowledge is carried in the embodied actions of the speaker. Stories need to be shared in ways that respect embodied teachings because this ensures knowledge is carried forward in a good way.

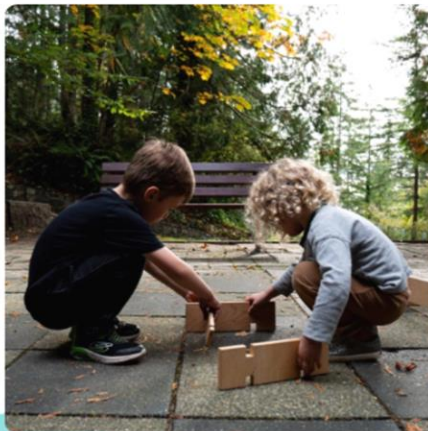
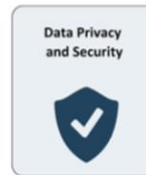
At this time AI does not follow Indigenous Protocols. AI cannot ask permission, share where teachings come from, source only from authentic resources, or receive embodied knowledge. Therefore using AI to create Indigenous lessons is cultural appropriation.

**"These tools do not authentically complement our teachings" - Dr. Gwendolyn Point, Shoyaqwelwhet**

Please do not use AI with Indigenous knowledge until the Nation you are sharing the information from has given specific permission. Using AI without specific permission exploits, extracts, and damages important relationships. This fosters stereotypes and hinders on-hum reconciliation efforts.

We use protocols with our tools because this honours our relationships and ensures those relationships will endure. Using tools without respecting protocols is cultural appropriation and exploitation.

## Possible Concerns



Ironically, by integrating generative AI tools in schools we might empower ourselves to focus less on screens and more on human connection, simplifying tasks so that technology becomes a supporting player rather than the main act.

## How do we view adoption of AI?



USE IT FOR YOURSELF IN YOUR NON-PROFESSIONAL LIFE



USE IT TO SUPPORT YOU AS A PROFESSIONAL



USE IT WITH STUDENTS



HAVE STUDENTS CREATE IN IT INDEPENDENTLY



## 30 Ways Real People are Using AI Right Now

(The New York Times) Nutritionist, Travel planner, Gardener, Trainer, Friendly learner

Plan gardens	Organize a messy computer desktop	Build a clock that gives you a new poem every minute	Transcribe a doctor's visit into clinical notes	Learn Chinese	Build entirely new games
Plan workouts	Write a wedding speech	Organize research for a thesis	Appeal an insurance denial	Get help when English is your second language	Teach people to curl like a pro
Plan meals	Write an email	Skim dozens of academic articles	Write excel formulas	Create an app when you've never coded before	Create new proteins in minutes
Make a gift	Get a first read	Cope with ADHD and dyslexia	Get feedback on fiction	Fix bugs in your code	Identify diseases in banana plants
Support Services Use Cases	Play devil's advocate	Sort through an archive of pictures	Get homework help	Play pong or 3D games	Draw like Sol LeWitt



## How have you or could you use AI?

What are some non-work ways you have or could use an AI tool in your life?

It does  
actually  
impact  
everyone

Trustees and Senior Leaders

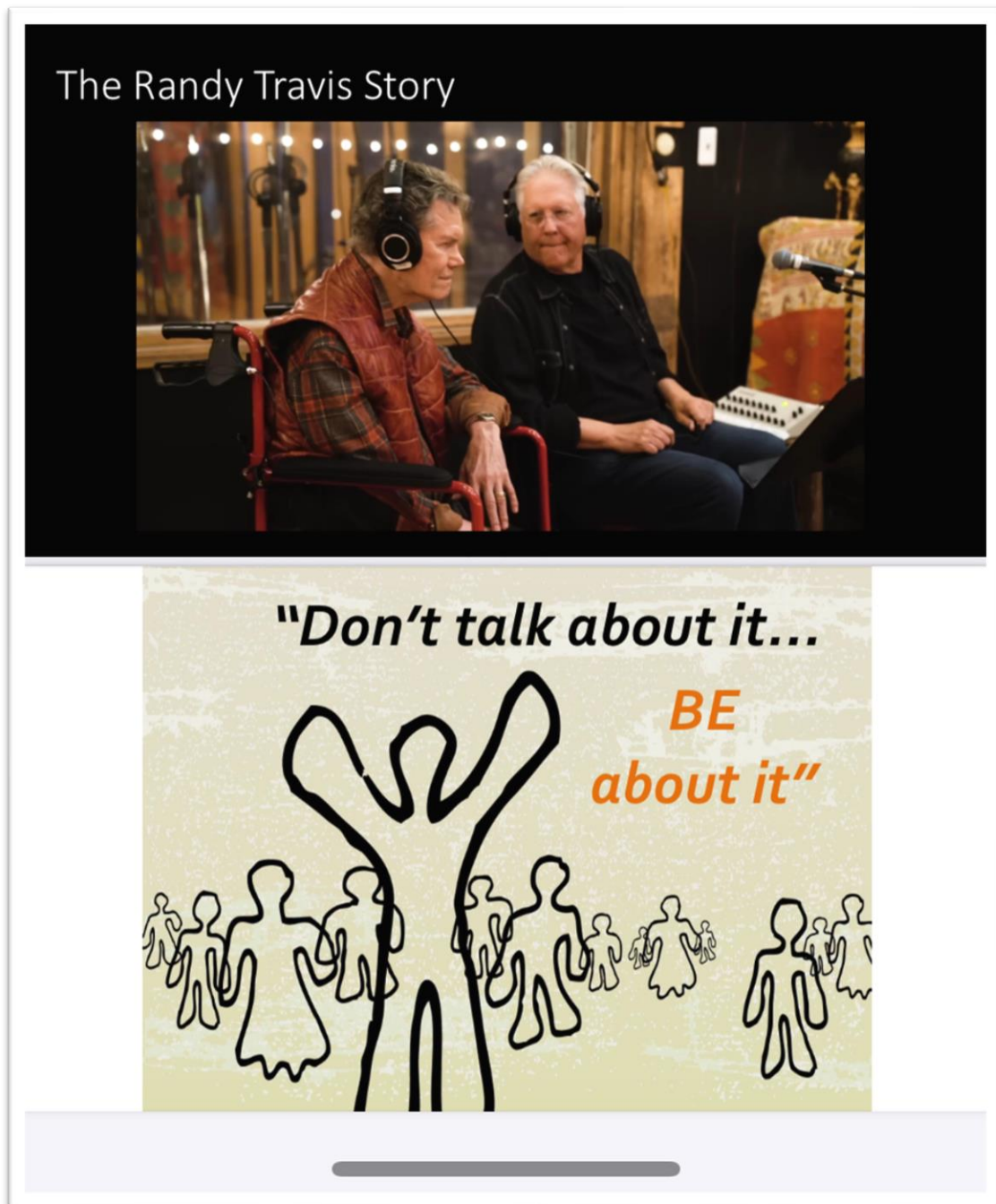
Business Operations

Teachers and Students

Parents and the community



[View how AI enabled Randy Travis to create new music after a stroke left him unable to talk.](#)



Join us for our next meeting, the PAC AGM, June 11<sup>th</sup>, 2025.