



**IMPORTANT INFORMATION  
PLEASE HAVE THIS TRANSLATED**

**RENSEIGNEMENTS IMPORTANTS**  
Prière de les faire traduire.

**重要資料**  
請找人為你翻譯

これはたいせつなお知らせです。  
どなたかに日本語に訳してもらってください。

**알려드립니다**  
이것을 번역해 주십시오

**CHỈ DẪN QUAN TRỌNG**  
Xin nhờ người dịch hộ

**ਜ਼ਰੂਰੀ ਜਾਣਕਾਰੀ**  
ਕਿਰਪਾ ਕਰਕੇ ਕਿਸੇ ਕੋਲੋਂ ਇਸ ਦਾ ਉਲੱਥਾ ਕਰਵਾਓ।

**INFORMACIÓN IMPORTANTE**  
Busque alguien que le traduzca.

**اطلاعات مهم و سودمند**  
لطفاً از یک نفر بخواهید که برای شما ترجمه کند

**ITO AY MAHALAGANG IMPORMASYON**  
Isalin sa wikang tagalog kung hindi maintindihan

يرجى ترجمة هذا  
معلومات هامة

**ВАЖНАЯ ИНФОРМАЦИЯ**  
Переведите это, пожалуйста.

E-Bulletin

EAGLE HARBOUR MONTESSORI

Sept. 8, 2022



Who doesn't want to start school with a slip and slide, freezies and our friends?! Thank you for the very best first day and wonderful start to our 2022/23 school year.

## DATES AT A GLANCE

<b>September</b>	7 - 16	Gradual Entry for K's begins - <a href="#">GRADUAL ENTRY CALENDAR</a>
	13	<b>Eagle Harbour PAC meeting - All Parents welcome! In the School Library @ 9:00am</b>
	17	First Day of All Kindergarten
	20	Cross Country Meet #1 - GO TEAM GO! (Notices & permissions going home Sept. 8th)
	21	Montessori International Peace Day
	21	Montessori Education Night - Stay Tuned for the details
	22	<a href="#">Terry Fox Run</a>
	23	Professional Development Day – <b>School is not in Session</b>
	27	Student Photography Day - Mountain West Studios
	27	Cross Country Meet #2 - GO TEAM GO!
	29	<a href="#">Orange Shirt</a> Day honoured at School
	30	<a href="#">National Day for Truth and Reconciliation</a> - School is not in Session



[EHMS 2022-23 ANNUAL SCHOOL CALENDAR](#)

## CROSS-COUNTRY MEETS - AMBLESIDE FIELD

We have hit the ground running so why not start training and participate in the District-wide cross country track meets with our peers as well?!



**WHO** **PRACTICES** - are for everyone who would like to join us, parents included!  
**DISTRICT MEETS** - are for interested students in grades 3 - 5

**WHEN** **PRACTICES** - Wednesdays & Thursdays at 8:00am September 14th  
**DISTRICT MEETS** - Tuesday Sept 20, 27 and Oct 4 at 3:45pm

**WHERE** **PRACTICES** - By the basketball court at the back of the school  
**DISTRICT MEETS** - Ambleside fields (by the beach)

**PLEASE NOTE:** Permission forms (going home today) are **required** for students wishing to participate in the **MEETS**.

Parents are responsible for transporting their children to/from the meets as well as while at the meet. Ms. Cameron will be there to coordinate/organize our team.

## MONTESSORI WELCOME PICNIC AND MONTESSORI INFORMATION NIGHT - MORE INFO TO COME

Please join us September 21st for our first in person information night which just so happens to be the same day as [Montessori International Day of Peace!](#) You will meet the staff and be able to put faces to the names. We will endeavour to answer any questions you may have about our Montessori program and see some very exciting "veggie races". More information heading your way on Thursday September 15th.



# International Day of Peace

Tuesday 21st September 2021

On this day, 21 September, we mark forty years of the International Day of Peace. This day was established in 1981 by the United Nations General Assembly and has been designated as a day of non-violence and cease-fire. This year's theme is "recovering better for an equitable and sustainable world".

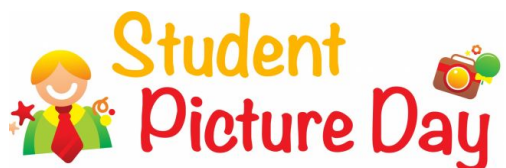
Cast your mind back 83 years to 21 September 1938, when Maria Montessori opens her first training course at the newly established training centre in Laren, the Netherlands. In the introductory lecture, she addressed students and officials in attendance. Montessori called everyone to action: the kind of action that inspires to contribute to a better world.

*"Let's unite, teachers and pupils alike. We all have to commit unanimously to a common and noble goal: to serve humanity."*

*"In these terrible and dangerous times (...) there is a strong spiritual presence, and that is the child who is free to become his own person."*

*"Today we ask for everybody's help."*

## STUDENT PHOTOS TUESDAY, SEPTEMBER 27



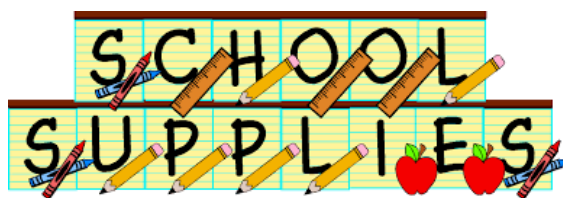
Who doesn't love checking out the annual student photo line up on the fridge ... proof that they are growing up! In order to get the very best from the photo opportunity, Mountain West suggests you visit their [information page](#) for tips on how to prepare for photo day.

## SCHOOL COMMUNICATION

Regular home communication is important to us so that you are kept aware of what is happening at the school. On a rare occasion we may send home information on paper; however, electronic means is our preferred method of contact. An Eagle Harbour Montessori eBulletin will be emailed home every Thursday. The Eagle Harbour Montessori website, calendar and Twitter platforms are also other important sources of information for families.

## SCHOOL SUPPLIES 2022/23

2022/23 Class school supplies may still be ordered online from [SchoolStart](#). Please note that ordering from SchoolStart is optional, however the items listed are required. If you prefer to go shopping for your student's supplies, please use the SchoolStart lists as your guide.



## MONTESSORI FEES 2022-2023



The annual fee of \$200.00 is due for the 2022-23 school year and available for payment to School District #45 West Vancouver via [SchoolCash Online](#) as soon as possible.

**If you have not received an email introducing SchoolCash Online and providing an access PIN by Friday, please email [plegg@wvschools.ca](mailto:plegg@wvschools.ca) and let her know.**

## DAILY HEALTH CHECK REMINDERS

**Performing a Daily Health Check:** Families should continue to perform the [daily health check](#) with your child(ren) prior to drop off each morning. If your child is not feeling well, **please do not send them to school.** The [BC Self-Assessment Tool](#) or [When to get tested](#) page are the most up to date resources to determine if you need testing.



We will continue to encourage our families to keep their children home when they are sick – doing so, helps to keep other learners, staff, and other families in our community healthy.

There are some protocols that we will continue to keep in place as they are very helpful and benefit all our learning community members.

If you will be visiting your child's teacher, appointments are still appreciated. We would also ask that you please sign-in in at the main entrance beside the office when you visit inside the school.

**MASKS** - As per current Ministry mandates, masks are optional for students in Kindergarten to Grade 7.

## WE ARE A NUT AWARE SCHOOL



In order to ensure the safest environment for each of our students, we are now a **NUT AWARE** school. What this means for you and your family - we respectfully ask that no nuts or nut butters of any kind come to school or are in the children's lunches.

# EHMS DAILY SCHOOL SCHEDULE FOR 2022/23

Arrival	8:35am	All Students	
Recess	9:55am - 10:15am	All Students	
12:05pm - 12:25pm	Play K - 3	Eat 4 - 5	
12:25pm - 12:45pm	Eat K-3	Play 4 - 5	
Dismissal	2:35pm	All Students	

## PICK UP AND DROP OFF INFORMATION



We are implementing some very important changes to our pick up and drop off procedures this year.

### **IMPORTANT**

These essential changes have been made in order to ensure our students' safety. With WiseOwl Preschool and Childcare operating at maximum capacity, as well as the StrongStart program operating out of the portable Monday - Thursday each week, the potential for a traffic related accident involving a student is significant. We respectfully request that the following regulations are adhered to by **ALL PARENTS** at **ALL TIMES**:

1. **EHMS parents of students in Grades 2 - 5** please either park ON MARINE DRIVE or drive through the round-about and drop off at the front door (students are welcome to walk through the school now). **ABSOLUTELY NO PARKING** is permitted in the round about. This area is for drop/pick up and go only.
2. **EHMS parents of students in Kindergarten and Grade 1 plus WiseOwl and StrongStart parents** please drop off and pick up in the parking lot beside the school **GYM**.

**Thank you all for your diligence as we keep our community safe.**

## EAGLE HARBOUR MONTESSORI (EHMS) PAC NEWS

We are pleased and grateful to all of you who support our little school in the woods. Our school community and PAC would like to remind you that all parents and guardians of students attending EHMS are members of our PAC and are welcome and encouraged to get involved. We would like to thank and introduce this year's PAC Executive Committee:

**PAC Chairperson** - Andrea (Pavlina's Mom)

**PAC Secretary** - Aoife (pronounced *AAY-FA* - Max's Mom)

**PAC Treasurer** - Dennise (Benjamin and Hanna's Mom)

**Fundraising Coordinator** - Randeep (Jordan's Mom)

**After School Programs** - Sharon (Magnolia's Mom)

**Hot Lunch Coordinators** - Melissa (Grace and Angus's Mom)

Tricia (Evelyn's Mom)



This year's first PAC meeting will be held in person on **September 13, 2022 at 9:00am** in the library. All parents and guardians are welcome to attend. If you prefer to join virtually click this [PAC MEETING LINK](#) Our September Agenda can be found [HERE](#).

## FALL 2022 AFTER SCHOOL PROGRAMS

The EHMS PAC has planned several after school programs for the fall. All programs take place at Eagle Harbour Montessori School and start at 2:40. Saplings instructors pick up children from school and walk with them to Park Verdun.

Please direct any inquiries to our After School Program Coordinator, Sharon Lee - Flynn at [sharonleeflynn@gmail.com](mailto:sharonleeflynn@gmail.com)

### SAPLINGS for K-5 - MONDAYS

2:40-4:30

September 12 - Dec 12, 2022 (12 classes)

Cost \$310



Kids will explore and experience the natural world through practical involvement. We believe the outdoors encourages imaginative play, creativity, hand-eye coordination, physical strength, and mental clarity. Our educators encourage children to develop their problem-solving and

critical-thinking skills. Additionally, a multi-age environment promotes cooperation and teamwork, while raising children's emotional awareness. [Register Here](#)

### **ARTMANIA - VISUAL ARTS PROGRAM K-5 - TUESDAYS**

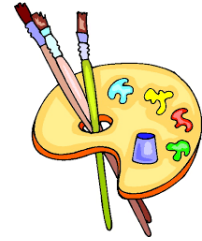
**2:40-3:40**

**September 13 - Oct 25 2022**

**Cost \$189**

#### **Architecture & Sculpture**

This class is for the student that loves to build and create! Students will learn how to draw buildings and interiors and sculpt their designs too! Essential concepts include one and two point perspective, drafting floor-plans, elevations and engineering and design- ing structures. [Register Here](#)



**Nov 1 - Dec 13 2022**

**Cost \$189**

#### **Storytelling through Art**

Students will hear stories about famous artists throughout history, while learning essential painting skills to build their art toolbox. This is an opportunity to introduce the masters early in your child's art education, that will inspire exploration and discovery. A great way to help children relate to artists from more than a century ago in a memorable way. [Register Here](#)

### **ARTMANIA - THE ACTING CLUB K-5 - WEDNESDAYS**

**2:40-3:40**

**September 13 - Oct 25 (7 classes)**

**Cost \$196**

**( no class October 5th )**

Join us with your friends to develop your creativity while strengthening your basic knowledge of acting with our industry professionals. Play is essential for the improvement and development of physical, cognitive and emotional well-being of children, helping them forge and reaffirm their personality. Join us once a week this fall for a fun time, getting goofy with your friends! [Register Here](#)



**Nov 1 - Dec 13 (7 classes)**

**Cost \$196**

Join us with your friends to develop your creativity while strengthening your basic knowledge of acting with our industry professionals. Play is essential for the improvement and development of



physical, cognitive and emotional well-being of children, helping them forge and reaffirm their personality. Join us once a week this fall for a fun time, getting goofy with your friends! [Register Here](#)

### **CHESS CLUB FOR Grades 1-5 - THURSDAYS (13 sessions)**

**2:40-3:40**

**September 15 -Dec 8 , 2022**

**Cost \$195**



You are invited to explore the strategic world of chess at the Eagle Harbour After School Chess Club. This club includes fundamentals for beginners along with strategies for the more advanced players. Chess Club players will have the opportunity to improve their skills by playing against other players of various levels and for advanced players, the opportunity to participate in province-wide tournaments. This class accepts beginners and experienced players alike from ages 6-11. Coach: James Chan, Master level player, top 10 in BC with a masters rating over 2200. [Register Here](#)

## COMMUNITY NEWS

### OPTIONAL ACCIDENT INSURANCE FOR FAMILIES

Each year the school district reminds families that they have the option to purchase insurance coverage against accidental injury, unexpected medical expenses and critical illness. One option is *The Family Accident Reimbursement Plan (FARP) provided by Industrial Alliance*. This voluntary plan provides coverage for students and their families against accidental injury, unexpected medical expenses and critical illness. As always, families are encouraged to do their due diligence when choosing a provider. Learn more here: <https://www.solutionsinsurance.com/aonbc> or contact Phone: 1.800.266.5667 Email: solutions@ia.ca



**WVFC Adaptive Soccer**

For Neurodiverse Players  
4-16 years-old



**Fall Program**  
*Fridays: 5:00-6:00 PM*  
Ambleside Park Field D Turf

Sept. 16,23,30, Oct. 7,14,21,28, Nov. 4,18,25, Dec. 2,9

**Inclusive, Supportive and FUN!**  
Register at [www.westvanfc.com](http://www.westvanfc.com)

## CHRIS KENNEDY, WV SCHOOLS SUPERINTENDENT

Get insight into the thoughts and ideas of Chris Kennedy, Superintendent of the West Vancouver School District. Read his latest blogs and follow him on Twitter to learn more from the CEO of WV Schools in: <https://cultureofyes.ca/> or <https://twitter.com/chrkennedy>

### CONTACT EAGLE HARBOUR MONTESSORI

School Website: [Eagle Harbour Montessori](http://Eagle Harbour Montessori)

Phone: 604.981.1380

Email: [eagleharbour@wvschools.ca](mailto:eagleharbour@wvschools.ca)