



OCTOBER 24, 2024

**REMINDER**

**PROVINCIAL PROFESSIONAL DEVELOPMENT DAY TOMORROW OCTOBER 25th**

**LOOKING AHEAD**

October 25	Professional Development Day - school not in session
<b>October 28</b>	<b>Student Photo Retake Day</b>
October 29	9:15AM PAC meeting in Gym
October 31	Halloween celebrations
November 3	Daylight Savings - clocks fall back one hour
November 6	Diwali Celebrations at Cypress Park
November 8	Indigenous Veterans Day
November 8	11:00 Remembrance Day Ceremony
November 11	Remembrance Day - school not in session
November 12	Professional Development Day - school not in session

**HALLOWEEN CELEBRATIONS  
COMING UP**

As students and families start to think about costumes, to ensure the day is fun for everyone, please observe the following dos and don'ts:

Feel welcome to dress in a costume or not.

Continue to avoid costumes that promote cultural stereotypes. If you're looking for information on cultural appropriation vs. cultural appreciation, click [HERE](#) for a CBC video; and for a great list of questions to ask about whether a costume is appropriate or not, click [HERE](#) to see information from UBC's Equity & Inclusion Office.

**NO MASKS**, beyond, of course, medical masks worn for health reasons.

Absolutely **NO WEAPONS** (swords, lightsabers, nunchucks etc.) and please make sure costumes are school appropriate.

Wear something comfortable that can be worn all day and can withstand being outside in any weather. Students should be able to put on their costume and take it off to use the bathroom by themselves.

Avoid scented items that might irritate others (e.g. some hair colouring products).

Come to school in your costume; there will be no changing in the washrooms.

Students who wish to bring in Halloween candy to school are asked to limit it to two pieces. **(remember no nuts please)**

**THE PARADE:**

Please arrive on time on the 31st. Students will go to their classes as per normal, where teachers will take attendance. Students will exit the school via their exterior classroom door and walk around the school. Please give the students space. The classes will keep moving. Bring an umbrella just in case! We will take lots of photos throughout the day so if you are unable to make the parade please do not worry!

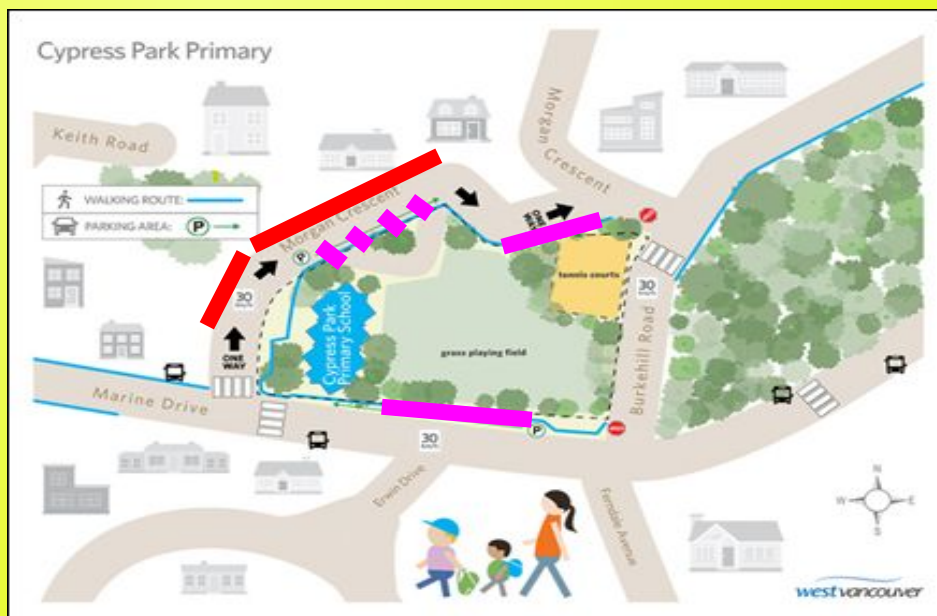
# SAFE ARRIVAL AND PICK UP INFORMATION

It is important to ensure that getting to and from school is safe for all students. Please do your part to follow Cypress Park's drop-off and pick-up procedures and expectations.

**SLOW DOWN  
SCHOOL  
ZONE**

- Slow down. Obey 30 km/hr. speed limits in school and playground zones
- Yield for pedestrians at ALL times
- When crossing the street use designated crosswalks only
- Please do not enter the staff parking area, this is for the safety of your children and to avoid any vehicle backups.
- Obey all posted parking signs - especially in the drop off areas immediately in front of the school; please be respectful of accessible spaces and reserved parking spots
- Parking along Morgan Crescent is for diagonal parking only. There is no parking on the left side of the street on Morgan. Additional designated parking is on right hand side of Marine Dr beside the school field.
- Please DO NOT stop immediately in front of the school to drop of your child this causes traffic issues for other cars wishing to get by.

**Please communicate this information to any other individuals who may be dropping off or picking up children.**



## PARENT INVITE TO SpacesEDU

Over the next month, you will be receiving an email invitation to join SpacesEDU. Please make sure to accept this invitation from your classroom teacher.

SpacesEDU is a web and mobile app/platform that allows teachers and students to capture, communicate, and reflect on what is happening in their classrooms. It is the easiest way to record learning, encourage reflection and spark conversations between students, staff, and families through an online digital portfolio. Teachers take a lot of time to document learning and students enjoy receiving feedback from their families so regular visits and comments are appreciated. SpacesEDU is where students will reflect on the Core Competencies and Approaches to Learning (ATL) that will accompany their Learning Updates.

Please see the following resource to get started:

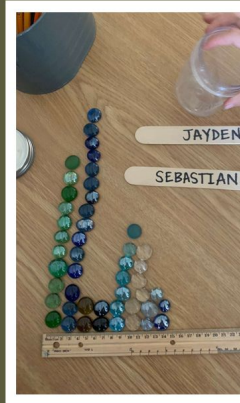
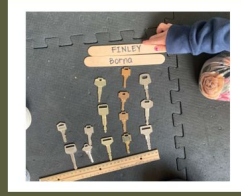


[https://resources.spacesedu.com/wp-content/uploads/2021/10/SpacesEDUFamily\\_GettingStarted\\_GuideEN.pdf](https://resources.spacesedu.com/wp-content/uploads/2021/10/SpacesEDUFamily_GettingStarted_GuideEN.pdf)



## How We Organize Ourselves *Mathematical Connections*

Students in grade one have been exploring the concept of graphing-organizing materials and data to compare and "read" information. Here are some of the graphs we created this week.



### NUMERACY

Grade two students played number games with a partner.

They worked on comparing numbers and reviewed odd and evens. They used our Social and Communication Skills to work cooperatively with their partner.



Sunshine after the rain.

### HOW WE ORGANIZE OURSELVES

Grade one students explored materials to develop a deeper understanding of how communities use systems to organize. Students used their social and communication skills to gather and create materials to show the different systems in our community and how they work. They later demonstrated through pictures and words how the systems FUNCTION and CONNECT.



## LEAVING EARLIER THAN 2:30 PM

Please email teachers and office first thing in the morning. All students need to be signed out at the office if departing before 2:30PM.

STUDENT ABSENCES PLEASE EMAIL [ethoma@wvschools.ca](mailto:ethoma@wvschools.ca)

## TAKE A PEEK EVERY WEEK

Head lice are a common, annoying pest that all schools encounter, and one great way to help control the spread of head lice is to take a peek every week. It is important that we change how we approach and talk about head lice in our community.



We would like to encourage parents to speak more freely with each other if their child has head lice and to notify the school immediately. **Please report** cases to the school; individual information is never shared but this helps bring an awareness to the community at large. We currently do not have any cases here at Cypress Park but it is the season and other schools in our community have reported head lice.

Our Cypress Park website has pamphlets and information sheets from Vancouver Coastal Health. You will find them under the school resource page, [click here](#). Please make sure to go here first, for any questions.

## SCHOOL ATTENDANCE AND PUNCTUALITY

We would like to take a moment to emphasize the importance of regular school attendance and punctuality.

**Consistent Attendance Matters:** Every day in school is an opportunity for your child to learn, grow, and thrive. Regular attendance ensures they don't miss out on valuable classroom experiences and educational milestones. It's the foundation for success in their academic journey.

**Vacations During School Time:** While we understand that family vacations are a cherished tradition, we encourage you to plan them during school breaks whenever possible. Missing school for extended periods can disrupt your child's learning progress and make it challenging for them to catch up on missed lessons.

**On-Time Arrival:** Being on time is equally crucial. It sets a positive tone for the day and allows your child to settle in, engage with peers, and benefit fully from classroom instruction. Punctuality fosters good habits that will serve them well throughout life.

**Late Arrival Policy:** If your child is arriving late to school, please drop them off outside the undercover entrance door. The door is unlocked, there is no reason to ring the bell. Your child can enter the school on their own and report to the front office. Ms. Thoma will check them in, and help them to their classrooms.

Your partnership in ensuring your child's regular attendance and punctuality greatly contributes to their success in school. We appreciate your support and commitment to their education.

## COMMUNITY INFORMATION

Community information will now be accessible in one convenient location. All local programs, events, and resources will be updated and shared with you each week by clicking [HERE](#).

**Christine Hulme**

Vice Principal, Cypress Park Primary School

**Office:** 604-981-1330 **Direct:** 604-209-8196



2024-2025 YEAR TO DATE CALENDAR

[HERE](#)

2024-2025 BELL SCHEDULE

[HERE](#)

PLAYGROUND RULES

[HERE](#)

CYPRESS PARK CODE OF CONDUCT

[HERE](#)



## REMINDERS & QUICK LINKS...

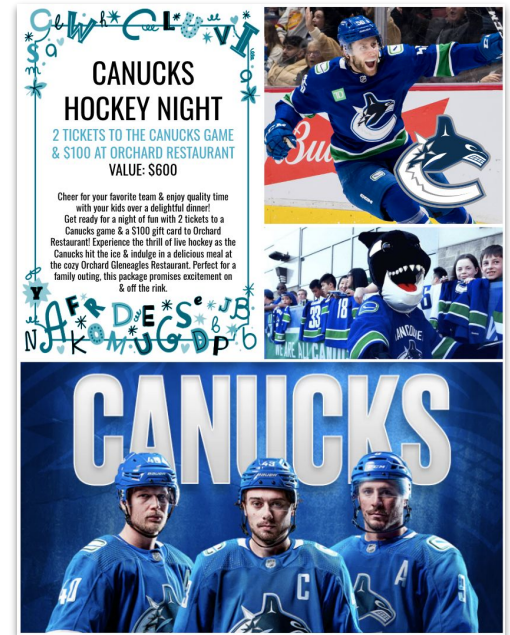
- ✓ **TEACHER'S GIFT:** We're **56%** to our goal! Please e-transfer [info.paccpp@gmail.com](mailto:info.paccpp@gmail.com) \$40 for each student & include "Teacher's Gift, Student Name, Grade" in the description.

## R IS FOR RAFFLE – FUNDRAISER

The [R is for Raffle](#) winter fundraiser kicks off next week (we've had a delay with the printer). Tickets will be coming home soon. Features include an Early Bird draw Thurs, Nov 7 (this could be extended) & a Live Draw at our Family Movie Night Wed, Nov 27. The **TOP 3 STUDENTS** with most tickets sold will get to choose from our list of fantastic non-grand prizes.

### OVER \$13,000 WORTH OF PRIZES INCLUDING...

2 Nights at Chateau Fairmont Whistler, 2 Nights Stay at a Waterfront Getaway Near Tofino, Westjet Flights, 2x Canucks & 4x Whitecaps Tickets, Neon Slime Party, Bike Park Passes, Cooking Classes, Lasertag, Bar Method, Fencing, Skoah Facial, Grouse Mountain & Award Winning Restaurants. [MORE PRIZES](#)



## — KINDNESS CORNER —

### THANKS TO ALL THE FALL FAIR VOLUNTEERS!

We had **43+ volunteers** that setup, brought snacks, decorated, baked & brought cakes, wine, books, helped sell tickets, take down, clean up & more! The kids had so much fun & **we raised \$1,300** for student resources & programs. THANKS again & great work everyone for hustling to make the Fall Fair happen a day early, so that our students could enjoy some fun in the sunshine ☀️



♥️ **THANKS TO ALL THE RAFFLE VOLUNTEERS FOR COLLECTING OVER \$13,000 WORTH OF DONATIONS**

# PAC MEETING NEXT TUESDAY

Tues, Oct 29 @ 9:15-10:15 AM

Please join us in the Cypress Park Gym to discuss upcoming programs, events & activities.

- [Sept 2024 Presentation & Meeting Minutes](#)
- **Online Details:** [Meeting link](#)  
ID: 220 914 355 921 | Passcode: KdX2gC




## FUNDING FUTURES: SPONSORSHIPS OF THE WEEK EXPERTS IN RESIDENTS & PROGRAM ENHANCEMENTS

Each year the Cypress Park PAC is responsible for providing program enhancements that make up our Experts in Residence programs, which is a collaboration between industry experts & our educators to introduce new concepts & opportunities to our children. **Upcoming Experts include...**

- **Music:** Andy the Musical Science Guy (Oct 11)
- **Health:** 2x Fencing (Oct 24 & Nov 1)
- **Theatre/Performing Arts:** Young Actors Project (Nov)
- **Language:** Les Petits Chefs – French Cooking Course (Fall)
- **Health:** Field hockey (x2 in Dec)

**EARTH BITES - GARDEN WORKSHOPS**


STUDENTS LEARN HOW TO EAT & GROW ORGANIC FOODS WITH THE SEASONS IN THESE...



**CAD\$200.00**

**JESS DANCE WORKSHOPS**


WORKSHOPS LED BY PROFESSIONAL DANCE ARTISTS THAT INTRODUCE STUDENTS TO DANC...



**CAD\$200.00**

**STUDENT IN NEED FUND**


HELP STUDENTS IN NEED WITH ADDITIONAL RESOURCES Value: QTY 4 | \$100 each or \$400 total



**CAD\$100.00**

**FIELD HOCKEY**


WEST VANCOUVER FIELD HOCKEY SESSIONS INTRODUCE INDOOR FIELD HOCKEY TO ALL...



**CAD\$125.00**

**HEALTH**


ENHANCED RESOURCES & LEARNING OPPORTUNITIES Value: QTY 4 | \$100 each or \$400...



**CAD\$100.00**

**LANGUAGES**

ENHANCED RESOURCES & LEARNING OPPORTUNITIES Value: QTY 4 | \$50 each or \$200...



**CAD\$50.00**

**-HELP SPONSOR THESE PROGRAMS TODAY-**

Or visit <https://cypress-park.square.site/>