



**TOP  
DRAWER**  
Daycare

## SUMMER CAMP

2025 JULY 1 – AUGUST 29



program information 2025

## SUMMER CAMP ADVENTURE AWAITS!

We're thrilled to announce our exciting Summer Camp program, designed to fill your child's days with fun, exploration, and creativity!

## WEEK 1 (July 1-4)

Grade 1 & up: \$262    Kindergarten: \$220

Mon, Jun 30	Tue, Jul 1	Wed, Jul 2	Thu, Jul 3	Fri, Jul 4
-	Canada Day -	Cates Park / Crab hunting	Bowling / Ice cream	Soccer Club / Baking mini pizza / Face Painting

- Jun 30, July 1: No activity day
- July 2: Send beach towel, hat, sunscreen and sandals.
- July 4: We're baking mini pizza. Please send enough snack and lunch.

## WEEK 2 (July 7-11)

Grade 1 & up: \$380    Kindergarten: \$320

Mon, Jul 7	Tue, Jul 8	Wed, Jul 9	Thu, Jul 10	Fri, Jul 11
Heywood Park	Whytecliff Park / Teddy Bear Picnic	The world of Kidtropolis	Viewlynn Park	Volleyball Club / Puppet making & drama / Talent show

- July 7: Send beach towel, hat, sunscreen, slippers.
- July 8: Bring teddy bear/stuffed animal, towel, snack, hat, sunscreen.

## WEEK 3 (July 14-18)

Grade 1 & up: \$380    Kindergarten: \$320

Mon, Jul 14	Tue, Jul 15	Wed, Jul 16	Thu, Jul 17	Fri, Jul 18
Eldon Water Park	Maplewood Farm	Soccer club / Dance Club	Moodyville park / Scooter Day or Roller skating	Bouncy Castle / Puzzle tournament

- July 14: Send extra clothes, towel, slippers, swimsuit, sunscreen, hat.
- July 15: Send hat and sunscreen.
- July 17: Send scooter/skates and helmet if available.
- July 18: Includes slides and water. Send swimsuit, towel, slippers, extra clothes.

## WEEK 4 (July 21-25)

Grade 1 & up: \$380    Kindergarten: \$320

Mon, Jul 21	Tue, Jul 22	Wed, Jul 23	Thu, Jul 24	Fri, Jul 25
Lynn Canyon Park	Stanley Park Second Beach	Crash Crawly's	The Shipyard Splash Park	Volleyball Club / Lego challenge

- July 21, 22: Send beach towel, hat, sunscreen.
- July 23: Indoor playground with slides and climbing.
- July 24: Send extra clothes, towel, slippers, swimsuit, sunscreen, hat.

## WEEK 5 (July 28 - Aug 1)

Grade 1 & up: \$380    Kindergarten: \$320

Mon, Jul 28	Tue, Jul 29	Wed, Jul 30	Thu, Jul 31	Fri, Aug 1
Mahon water park	Science World	Soccer club / Science activity	Cates Park / Crab hunting	Bouncy Castle / Bubble Mania

- July 28: Send extra clothes, towel, slippers, swimsuit, sunscreen, hat.
- Aug 1: Includes slides and water. Send swimsuit, towel, slippers, extra clothes.

## WEEK 6 (Aug 4-8)

Grade 1 & up: \$330    Kindergarten: \$280

Mon, Aug 4	Tue, Aug 5	Wed, Aug 6	Thu, Aug 7	Fri, Aug 8
-	Dundarave Beach / Sandcastle Contest	Art studio / Local Park	Confederation Water Park	Volleyball club / Friendship Bracelet Making / Face painting

- Aug 5: Send sunscreen, hat.
- Aug 7: Send extra clothes, towel, slippers, swimsuit.

**WEEK 7 (Aug 11-15)**

Grade 1 &amp; up: \$380    Kindergarten: \$320

Mon, Aug 11	Tue, Aug 12	Wed, Aug 13	Thu, Aug 14	Fri, Aug 15
Granville Island water Park	Bridgman Park / Rock Painting	Soccer club / Crafting: Wood, Stone, Jewellery	Space Centre	Bouncy castle and water games

- Aug 11: Send extra clothes, towel, slippers, swimsuit, sunscreen, hat.
- Aug 15: Includes slides and water. Send swimsuit, towel, slippers, extra clothes.

**WEEK 8 (Aug 18-22)**

Grade 1 &amp; up: \$380    Kindergarten: \$320

Mon, Aug 18	Tue, Aug 19	Wed, Aug 20	Thu, Aug 21	Fri, Aug 22
Viewlynn water park	Oh My Land Club	Water Fight & Ice Cream Social	Heywood Park	Soccer Club / Art club

- Aug 18, 20: Send beach towel, hat, sunscreen, slippers.

**WEEK 9 (Aug 25-29)**

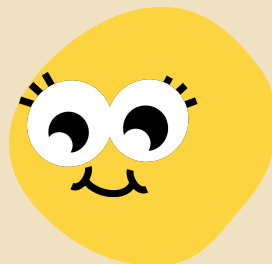
Grade 1 &amp; up: \$380    Kindergarten: \$320

Mon, Aug 25	Tue, Aug 26	Wed, Aug 27	Thu, Aug 28	Fri, Aug 29
John Lawson Park water park	Egg Dropped Project / Freeze Dance tournament	Revs Bowling / Ice cream Social	Bridgeman Park / Rock Painting	Burnaby museum

- Aug 25: Send beach towel, hat, sunscreen, slippers.
- Aug 26: Send protective container for Egg Drop (e.g., small box).
- Aug 27, 28, 29: Location: St Andrew's Church

## PLEASE NOTE:

All field trips are pre-booked for specific times, so it's essential to have your child at the club no later than 10:00 AM each morning to ensure they don't miss the bus. We cannot wait for late arrivals. Field trips will take place in the morning and continue into the early afternoon, with all children returning to the daycare base by 3:30 PM.



### TRANSPORTATION DETAILS:

Our summer camp base is at **Chartwell School**. Transportation will be provided for North Vancouver children between **Ray Perrault Park** and **Chartwell School** as follows:

- **Morning Pick-up:** Vans will be at Ray Perrault Park from **7:30 AM**. They will leave for Chartwell School at **8:30 AM**.
- **Afternoon Drop-off:** Vans will return children to Ray Perrault Park by **5:00 PM**. Teachers will supervise children at Ray Perrault Park from **5:00 PM** to **6:00 PM**. Parents must pick up their children during this time.

Parents may also drop off or pick up their children directly at Chartwell School if preferred.

### TRANSPORTATION FOR WEST VANCOUVER FAMILIES

We will be open at Chartwell from **8:30 AM** to **6:00 PM**. Drop-off and pick-up will take place at Chartwell.

If you would like to pick up your child from North Vancouver instead, please let us know in advance so we can coordinate accordingly.

For days with outings, please ensure your child is dropped off at the daycare before **10:00 AM** to avoid missing the camp for that day.

### FOR PARENTS USING CHARTWELL SCHOOL:

- **Drop-off Time:** Starting at **8:30 AM**.
- **Pick-up Time:** Children must be picked up by **6:00 PM**, as the daycare closes promptly at this time.

### WHATSAPP GROUP:

Please Join Our **WhatsApp Group Chat** To Receive Updates About Your Child's Activities, Locations, And Photos Throughout The Day.

### LAST THREE DAYS OF CAMP:

For the final three days, the camp base will move to **St. Andrew's Church**.

- **Drop-offs:** Take your child directly to St. Andrew's Church.
- **Pick-ups:** The pick-up location will vary. Children may be at nearby parks or back at the church.  
Please check the WhatsApp group for real-time updates.



## PAYMENT INSTRUCTIONS

To secure your child's spot in our summer care program, a \$250 deposit is required. This deposit should be sent via e-transfer to **info@topdrawerdaycare.ca** at the time of booking.

The \$250 deposit will be applied to your total fees and is not an additional cost.

For payment of the remaining fees:

- **For enrollments of less than 6 weeks:** The full payment is due by **July 1st**.
- **For enrollments of 6 weeks or more:** You have the option to split your payments into two installments:

1. The first payment is due by **July 1st**.
2. The second payment is due by **August 1st**.

### Discount Offer:

If you enroll your child for the full 9 weeks, you'll receive a discounted rate of **\$350 per week** (instead of the regular \$380 per week).

We strongly encourage e-transfers as the preferred payment method for all fees.

**Drop In** (Daily): \$90



info@topdrawerdaycare.ca  
www.topdrawerdaycare.ca

**(604) 218-7055**

Scan for more info & Registration  
or use this link:

[topdrawerdaycare.ca/summer-camp](http://topdrawerdaycare.ca/summer-camp)

